

A Feast for the Senses!

Year 1 Home Learning
Autumn Term 1 2023



PSHE - LifeWise

What is friendship?

What does it mean to be a good friend? You could show us by drawing a picture or writing a short story!

By week beginning 25th September

**THREE
MILE
STONE**
Primary School

SCIENCE - RESEARCH



Are there plants that are in flower in every season? What are they?

By week beginning 2nd October

RE - Does God want Christians to look after the world?

How do you think a Christian might choose to look after the world?
Could you have a go at doing this?
E.g. bring in a photograph of you litter picking!

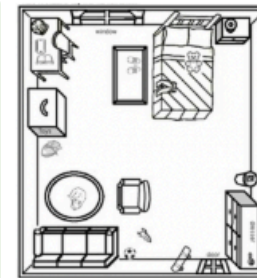


By Week beginning 16th October

GEOGRAPHY

Can you draw a map of your bedroom?
Could you include a key? Is it bird's eye view?

By week beginning 9th October



ART



How many different materials can you print from at home?



By week beginning 18th September



September composer of the month - Mozart
October composer of the month - Debussy

